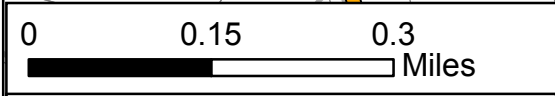
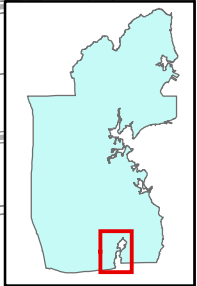


**STUDY AREA #12 Gilbert Stuart/Walmsley Lane
Special Flood Hazard Area
Source: RIEMA 2013**

**TOWN OF NORTH KINGSTOWN
Climate Adaptation Plan, 2014**



This map is not a product of a Professional Land Survey. It was created for general reference, informational, planning or guidance use, and is not a legally authoritative source as to location of natural or man-made features. Proper interpretation of this map may require the assistance of appropriate professional services. The Town of North Kingstown makes no warranty, express or implied, related to the spatial accuracy, reliability, completeness or currentness of this map.

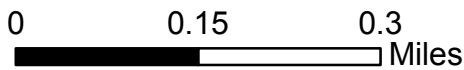
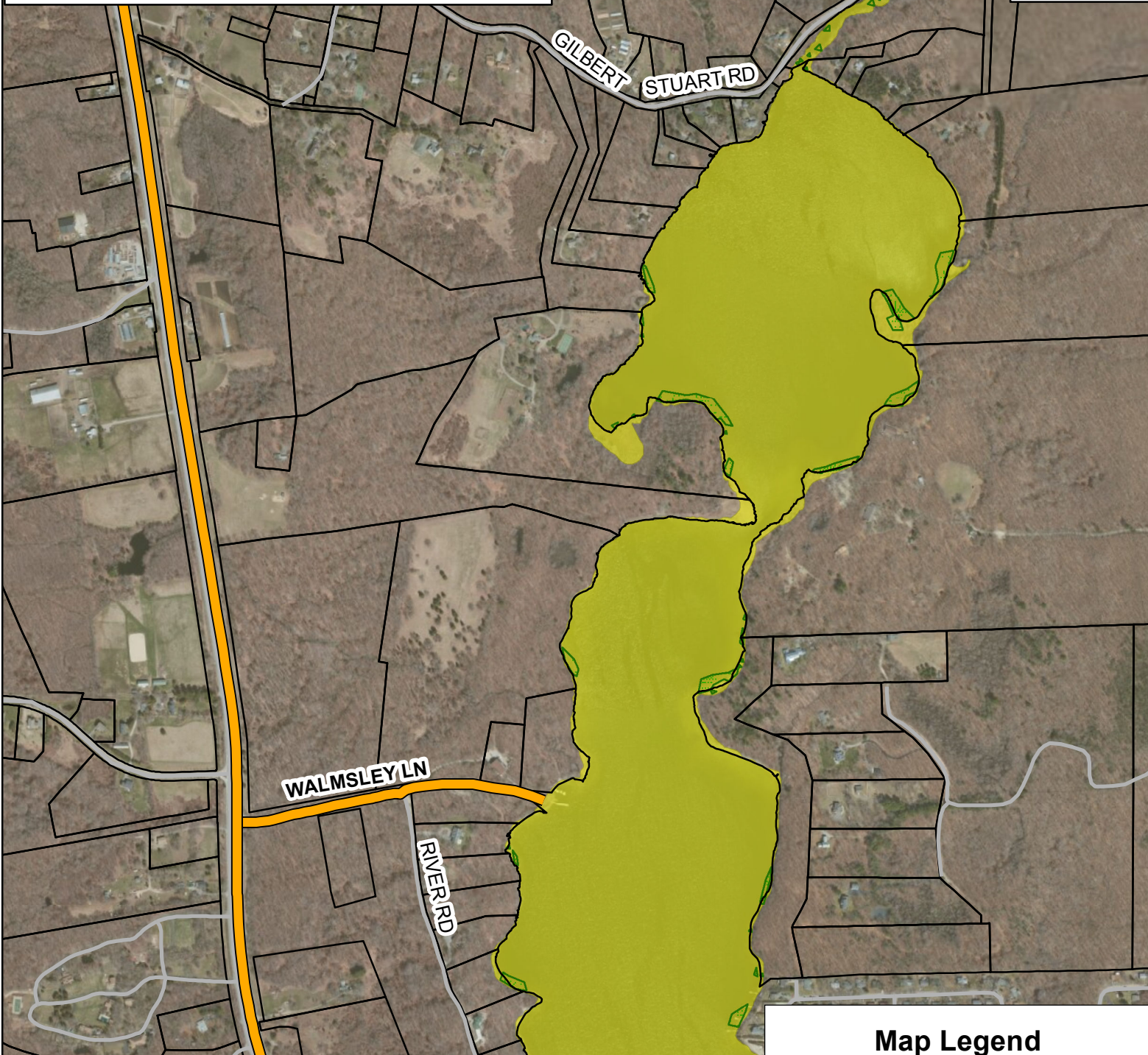
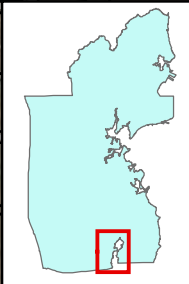


Map Legend

- Evacuation Route
- Roads
- VE
- AE
- A
- 0.2% annual chance of flood

**STUDY AREA #12 Gilbert Stuart/Walmsley Lane
Sea Level Rise Exposure Assessment
Salt Marsh Migration Scenarios
MHHW+1 ft Sea Level Rise**

**TOWN OF NORTH KINGSTOWN
Climate Adaptation Plan, 2014**



This map is not a product of a Professional Land Survey. It was created for general reference, informational, planning or guidance use, and is not a legally authoritative source as to location of natural or man-made features. Proper interpretation of this map may require the assistance of appropriate professional services. The Town of North Kingstown makes no warranty, express or implied, related to the spatial accuracy, reliability, completeness or currentness of this map.

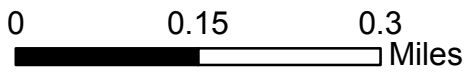
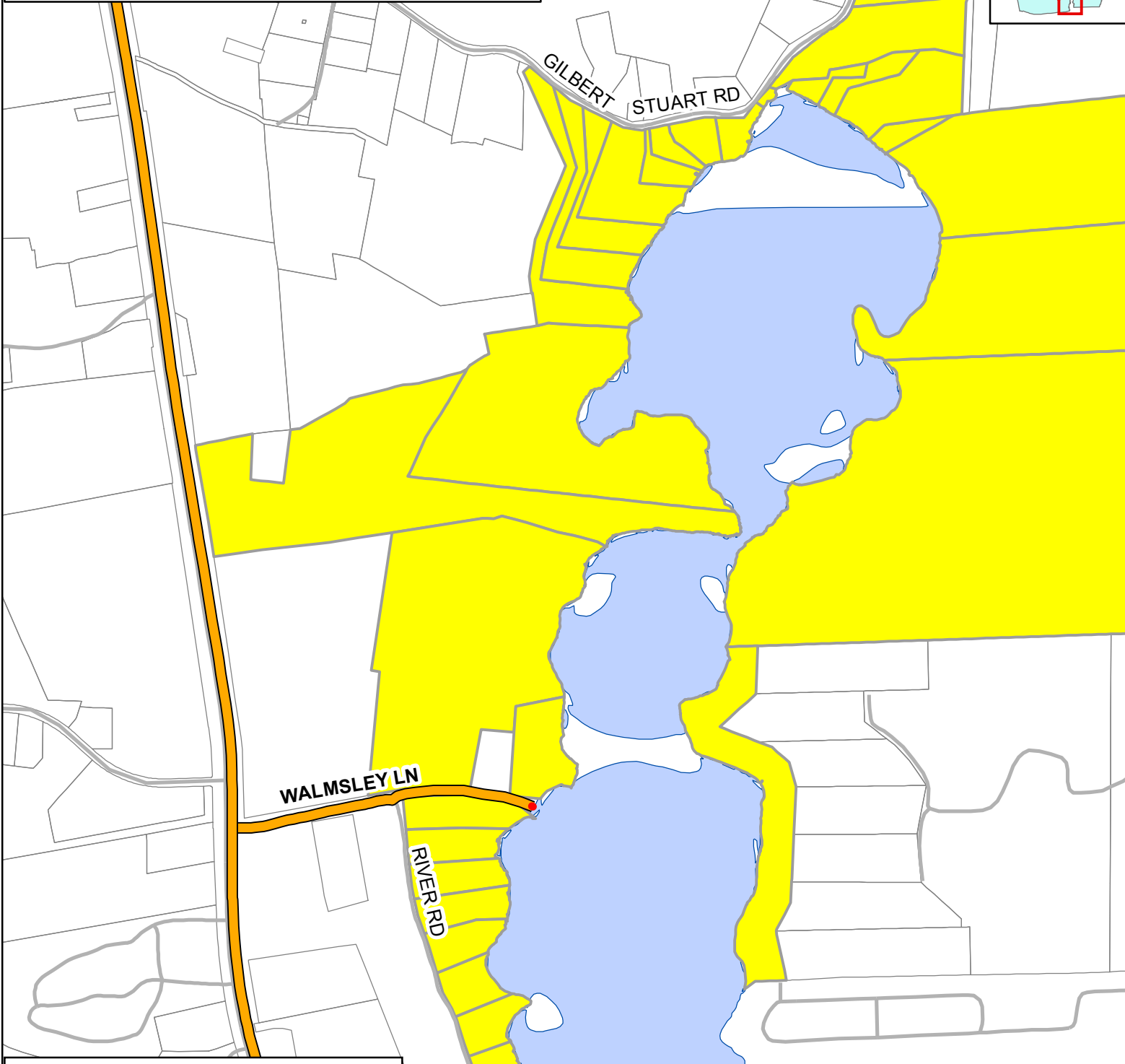
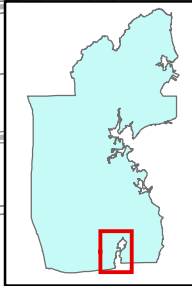


Map Legend

- Evacuation Route
- MHHW+1ft Sea Level Rise
- Salt Marsh Migration - 1ft SLR
- Roads
- Town Parcels

**STUDY AREA #12 Gilbert Stuart/Walmsley Lane
Sea Level Rise Exposure Assessment
Parcels and Roads within MHHW+1ft**





**TOWN OF NORTH KINGSTOWN
Climate Adaptation Plan, 2014**



This map is not a product of a Professional Land Survey. It was created for general reference, informational, planning or guidance use, and is not a legally authoritative source as to location of natural or man-made features. Proper interpretation of this map may require the assistance of appropriate professional services. The Town of North Kingstown makes no warranty, express or implied, related to the spatial accuracy, reliability, completeness or currentness of this map.

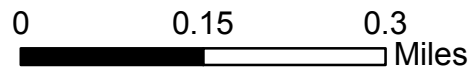
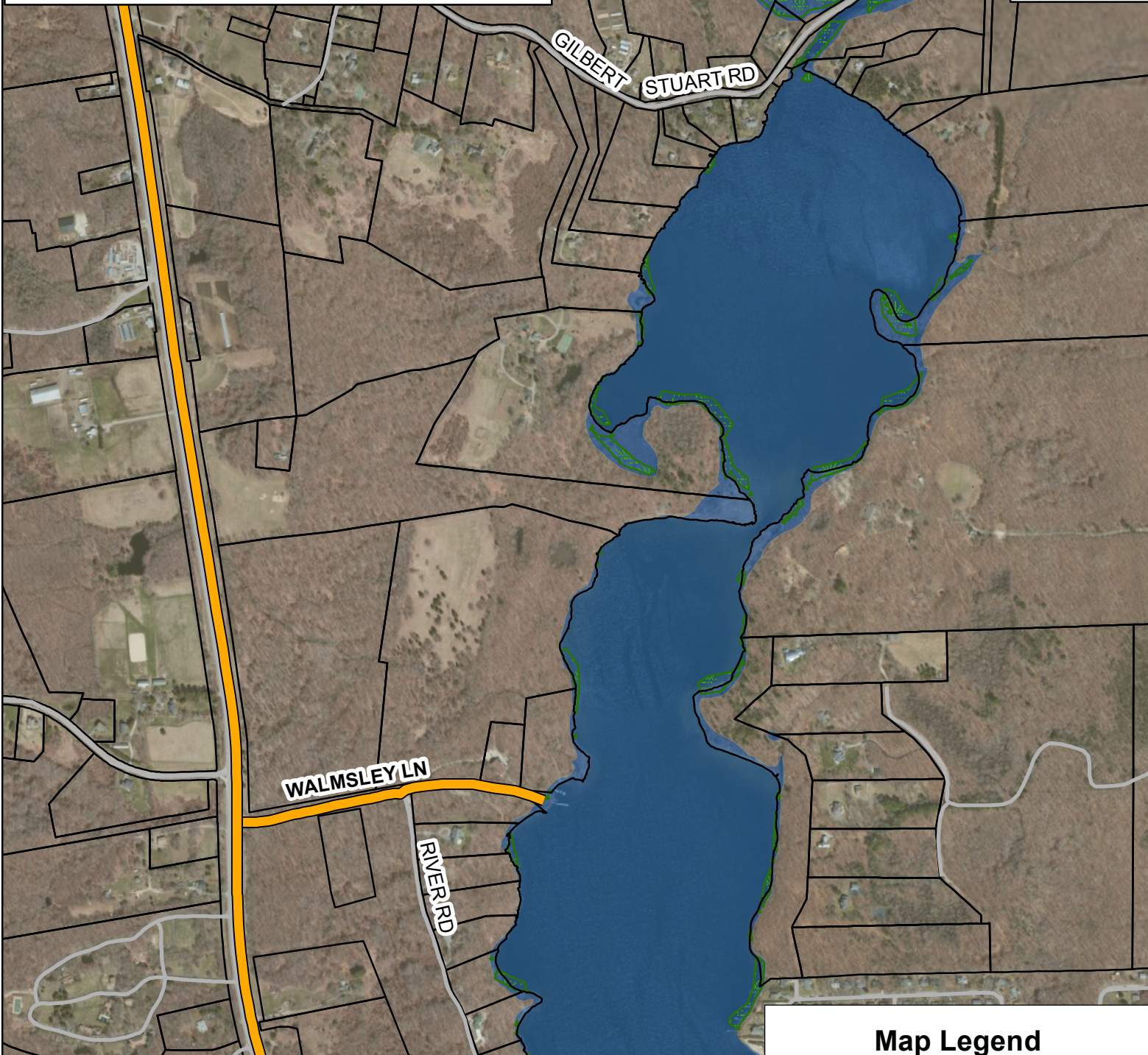
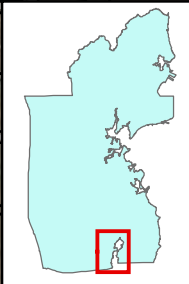


Map Legend

-  Parcels within boundary of MHHW+1
-  Roads within boundary of MHHW+1
-  Evacuation Route
-  Roads

**STUDY AREA #12 Gilbert Stuart/Walmsley Lane
Sea Level Rise Exposure Assessment
Salt Marsh Migration Scenarios
MHHW+3 ft Sea Level Rise**

**TOWN OF NORTH KINGSTOWN
Climate Adaptation Plan, 2014**



This map is not a product of a Professional Land Survey. It was created for general reference, informational, planning or guidance use, and is not a legally authoritative source as to location of natural or man-made features. Proper interpretation of this map may require the assistance of appropriate professional services. The Town of North Kingstown makes no warranty, express or implied, related to the spatial accuracy, reliability, completeness or currentness of this map.

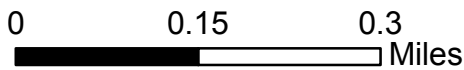
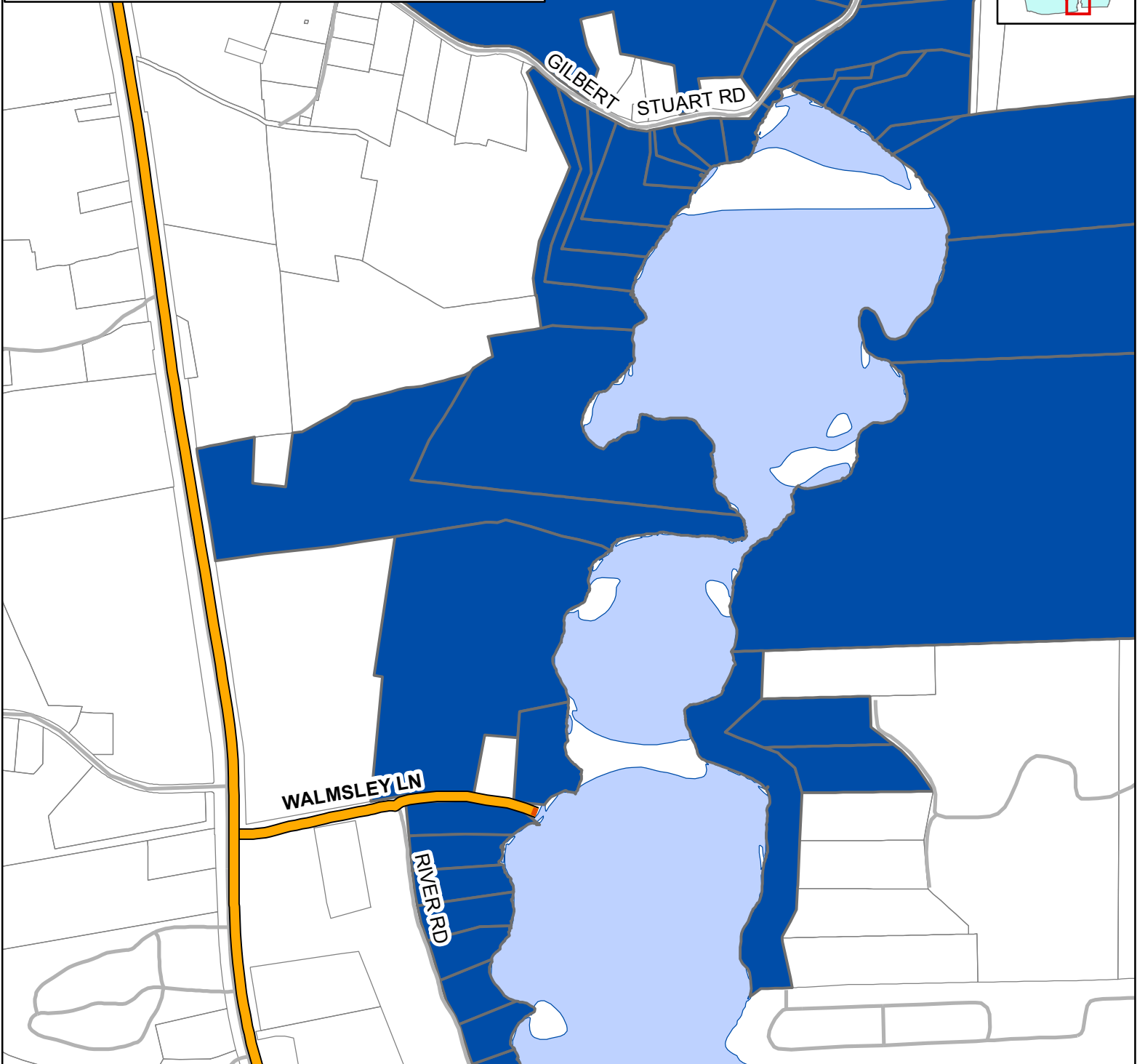
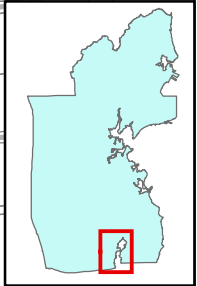


Map Legend

- Evacuation Route
- MHHW+3ft Sea Level Rise
- Salt Marsh Migration - 3ft SLR
- Roads
- Town Parcels

**STUDY AREA #12 Gilbert Stuart/Walmsley Lane
Sea Level Rise Exposure Assessment
Parcels and Roads within MHHW+3ft**

**TOWN OF NORTH KINGSTOWN
Climate Adaptation Plan, 2014**



This map is not a product of a Professional Land Survey. It was created for general reference, informational, planning or guidance use, and is not a legally authoritative source as to location of natural or man-made features. Proper interpretation of this map may require the assistance of appropriate professional services. The Town of North Kingstown makes no warranty, express or implied, related to the spatial accuracy, reliability, completeness or currentness of this map.

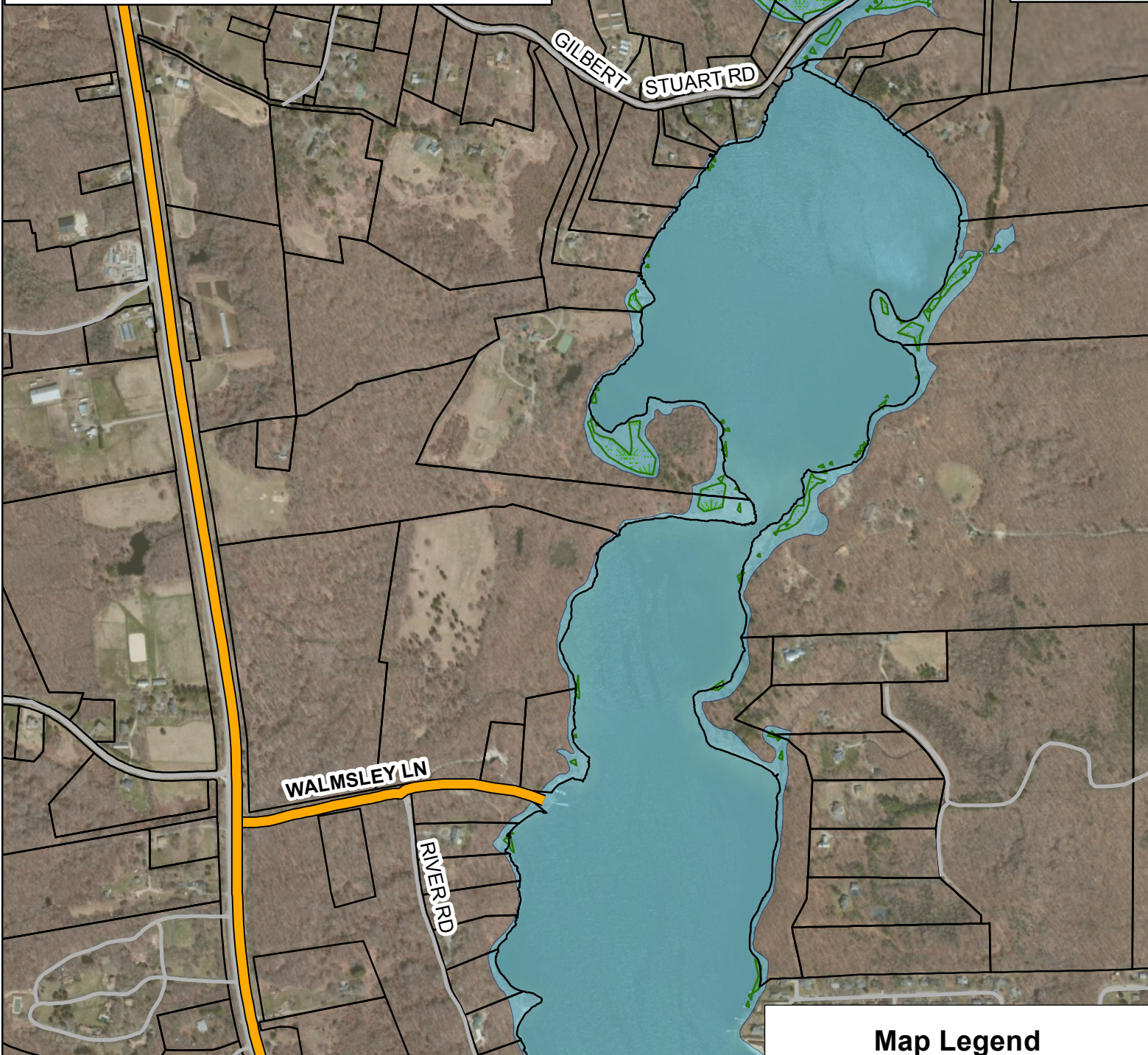
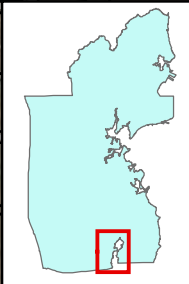


Map Legend

- Parcels within boundary of MHHW+3
- Roads within boundary of MHHW+3
- Evacuation Route
- Roads

**STUDY AREA #12 Gilbert Stuart/Walmsley Lane
Sea Level Rise Exposure Assessment
Salt Marsh Migration Scenarios
MHHW+5 ft Sea Level Rise**

**TOWN OF NORTH KINGSTOWN
Climate Adaptation Plan, 2014**



0 0.15 0.3 Miles

This map is not a product of a Professional Land Survey. It was created for general reference, informational, planning or guidance use, and is not a legally authoritative source as to location of natural or man-made features. Proper interpretation of this map may require the assistance of appropriate professional services. The Town of North Kingstown makes no warranty, express or implied, related to the spatial accuracy, reliability, completeness or currentness of this map.

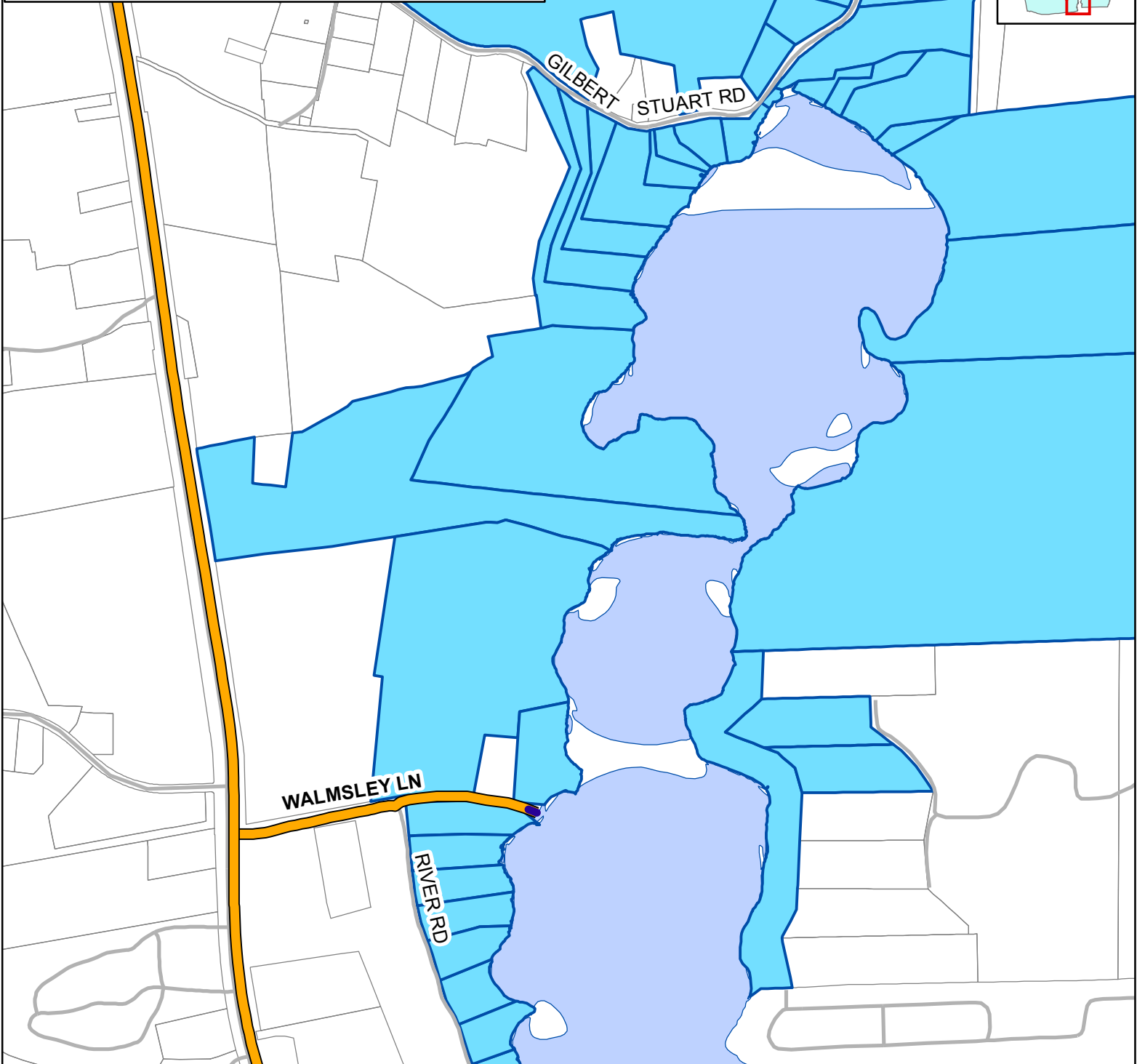
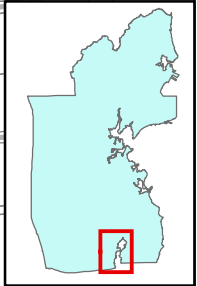


Map Legend

- Evacuation Route
- MHHW+5ft Sea Level Rise
- Salt Marsh Migration - 5ft SLR
- Roads
- Town Parcels

**STUDY AREA #12 Gilbert Stuart/Walmsley Lane
Sea Level Rise Exposure Assessment
Parcels and Roads within MHHW+5ft**

**TOWN OF NORTH KINGSTOWN
Climate Adaptation Plan, 2014**







0 0.15 0.3
Miles

This map is not a product of a Professional Land Survey. It was created for general reference, informational, planning or guidance use, and is not a legally authoritative source as to location of natural or man-made features. Proper interpretation of this map may require the assistance of appropriate professional services. The Town of North Kingstown makes no warranty, express or implied, related to the spatial accuracy, reliability, completeness or currentness of this map.



Map Legend

-  Parcels within boundary of MHHW+5
-  Roads within boundary of MHHW+5
-  Evacuation Route
-  Roads